

# Gary Moore : Still Got the Blues

settings suggestion :

pickup = 100% neck

EQ = 100% bass / 50% mid / 50% treble

Solo A :



Verse :



Chorus A :



Verse

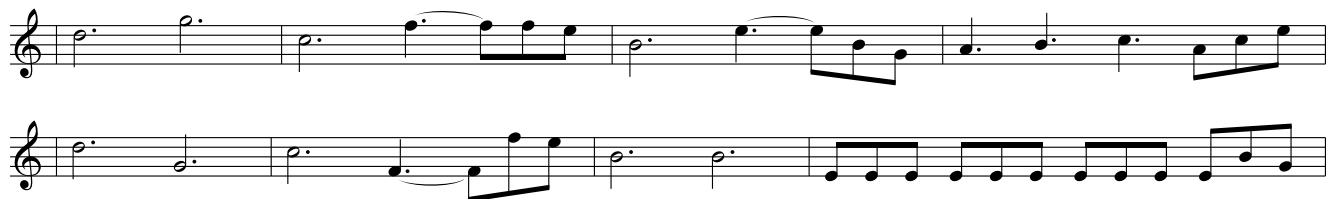
Chorus B :



Bridge A :



Solo B :



Chorus C :



Outro :



Visit <http://www.ilovetabs.com> for other tablators, scores and midi files for bass guitar.