

Jerry Jeff Walker : Dear John Letter Lounge

settings suggestion :

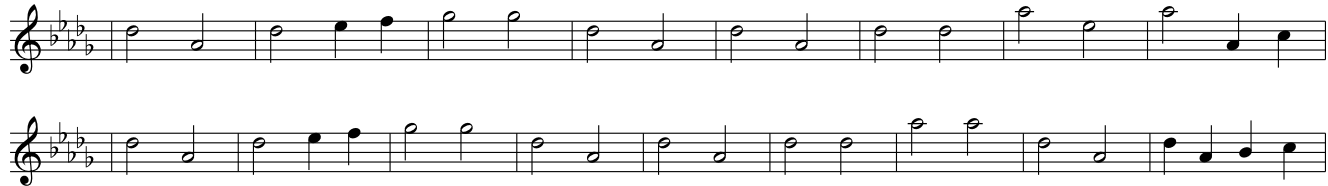
pickup = 100% neck

EQ = 100% bass / 50% mid / 50% treble

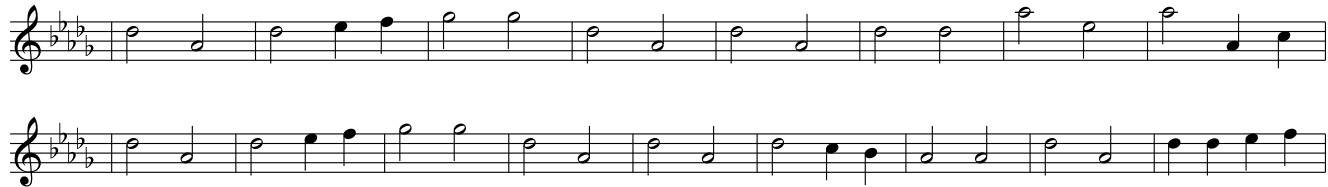
Intro :



Verse A :



Verse B :



Chorus A :



Bridge :



Verse B

Chorus B :



Visit <http://www.ilovetabs.com> for other tablaters, scores and midi files for bass guitar.