

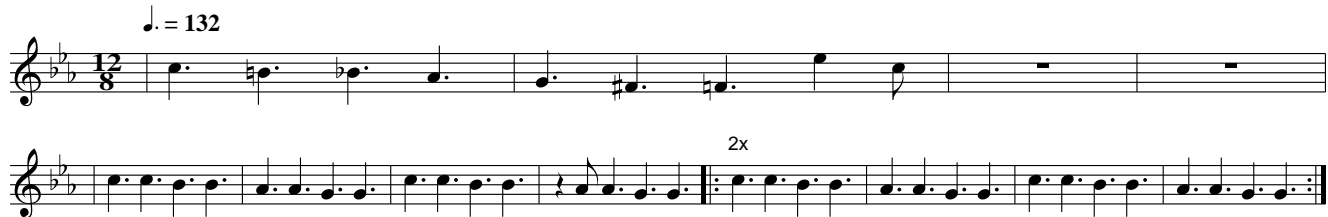
Stray Cats : Stray Cat Strut

settings suggestion :

pickup = 100% neck

EQ = 100% bass / 50% mid / 0% treble

Intro :



Verse :



Bridge :



Solo A :



Chorus :



Bridge

Solo B :



Chorus

Outro :



Legend :

H = Hammer On (of the note just below the H)

Visit <http://www.ilovetabs.com> for other tablators, scores and midi files for bass guitar.