

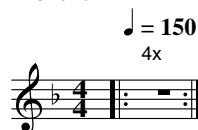
Toad The Wet Sprocket : Fall Down (*)

settings suggestion :

pickup = 100% bridge

EQ = 50% bass / 50% mid / 50% treble

Intro :



Verse :



Chorus A :



Bridge :

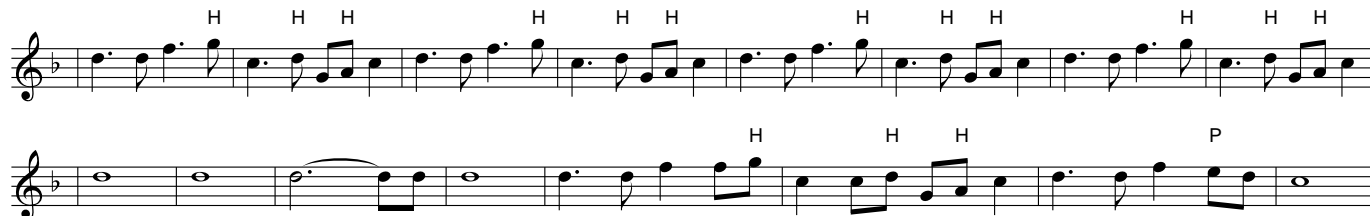


Verse

Chorus B :



Solo :



Verse

Chorus B

Outro :



Legend :

(*) This transcription of the original song has been simplified

H = Hammer On (of the note just below the H)

P = Pull Off (of the note just below the P)

Visit <http://www.ilovetabs.com> for other tabulators, scores and midi files for bass guitar.