

Trooper : 3 dressed up as a 9 (*)

settings suggestion :

pickup = 50% neck / 50% bridge

EQ = 50% bass / 50% mid / 50% treble

Intro :



Verse :



Chorus A :

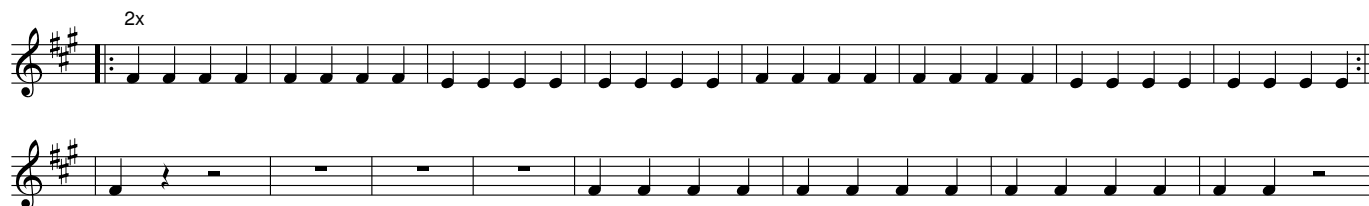


Verse

Chorus B :



Solo :



Verse

Chorus B

Chorus B fading out the volume

Legend :

(*) This transcription of the original song has been simplified

Visit <http://www.ilovetabs.com> for other tabulators, scores and midi files for bass guitar.